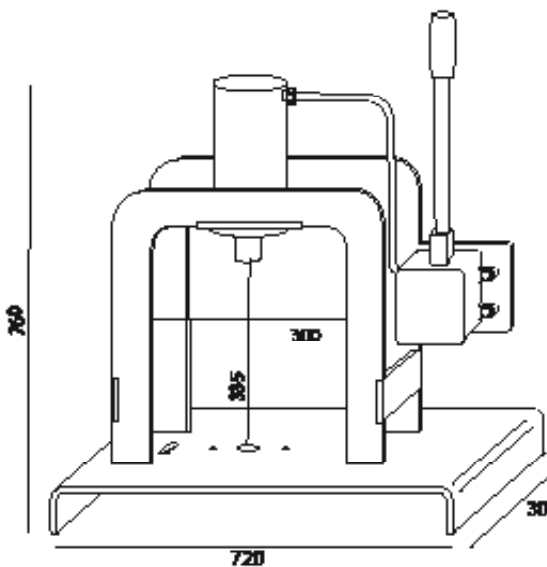


Connessione per centralina idraulica
Connection for Hydraulic control unit

DOMANDA DI BREVETTO - PATENT PENDING



Caratteristiche tecniche - Technical features

Pressa - Press : Manuale 8,5t - *Manual 8,5 t*


Pompa - Pump : Manuale 200bar doppia mandata singolo effetto - *Manual 200bar double acting single effect*

Peso complessivo - Total weight : 55kg

Olio - Oil : Total Azolla HZS46



PRESSA IDRAULICA HYDRAULIC PRESS

Kit taglia catena Linde-flyer / Linde-flyer Chain cutting kit <i>Solo per modello BK8500 / For model BK8500 only</i>	Codice Code	Tipi catene/Chains type
	BK0023	LINDE-OM-STILL TIPO 080 LINDE-OM-STILL TIPO106 LINDE-OM-STILL TIPO110 LINDE-OM-STILL TIPO111 CESAB-TOYOTA BL544KS FLYER AL4--/BL4--/EL4-- FLYER AL5--/BL5--/EL5-- FLYER AL6--/BL6--/EL6-- FLYER AL8--/BL8--/EL8--

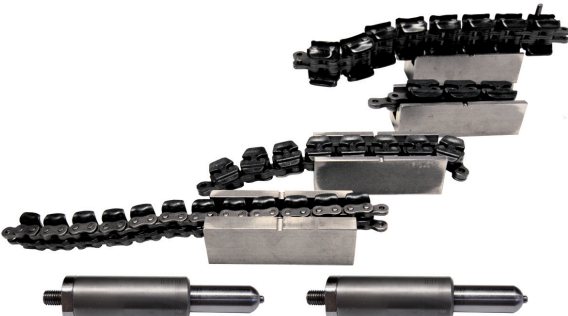
DOMANDA DI BREVETTO - PATENT PENDING

Kit taglia catena FLYER/ FLYER Chain cutting kit <i>Solo per modelli BK1800 e BK8500 / For model BK1800 and BK8500 only</i>	Codice Code	Tipi catene/Chains type
	BK0021	AL4-- BL4-- EL4-- AL5-- BL5-- EL5-- AL6-- BL6-- EL6--




BKZ077 Puntone opzionale 7,8 mm per taglio caetne FLYER
AL8--/BL8--/EL8--
optional 7,8mm FLYER AL8--/BL8--/EL8-- cutter tool

DOMANDA DI BREVETTO - PATENT PENDING

Kit taglia catena Linde / Linde Chain cutting kit <i>Solo per modello BK8500 / For model BK8500 only</i>	Codice Code	Tipi catene/Chains type
	BK0020	LINDE-OM-STILL TIPO 080 LINDE-OM-STILL TIPO106 LINDE-OM-STILL TIPO110 LINDE-OM-STILL TIPO111 CESAB-TOYOTA BL544KS

DOMANDA DI BREVETTO - PATENT PENDING

Puntone tagliacatena/ Chain cutter tool <i>Solo per modello BK8500 / For model BK8500 only</i>	Codice Code	Diametro perno Pin diameter	Tipi catene/Chains type
	BKZ075	3,8mm	AL4--/BL4--/AL5--/EL4-EL5--
	BKZ076	5,8mm	BL5--/BL6--/AL6--/EL6--
	BKZ077	7,8mm	AL8--/BL8--/EL8--

DOMANDA DI BREVETTO - PATENT PENDING





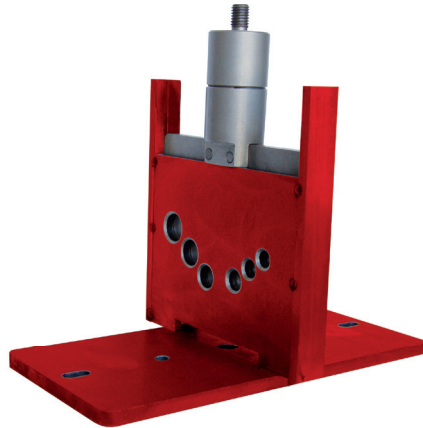
ACCESSORI / ACCESSORIES

PRESSA IDRAULICA
HYDRAULIC PRESS

Kit taglia cavi batteria / Battery cable cutting kit
Solo per modelli BK1800 e BK8500 / For model BK1800 and BK8500 only

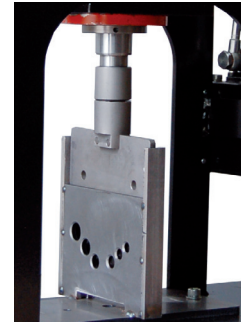
Codice Code

Tipi di cavi / Cables type



BK0022

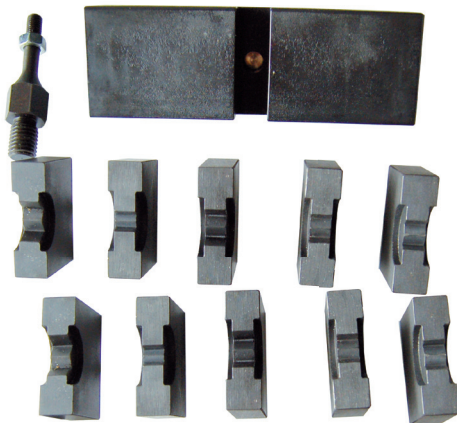
16mm²- 25mm²- 35mm²- 50mm² 70mm²- 95mm²



Kit pressa cavi / Press cables kit
Per tutti i modelli / For all models

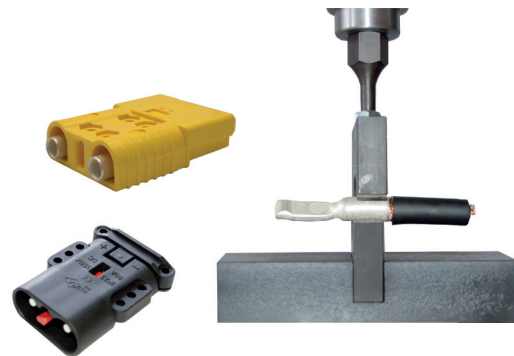
Codice Code

Tipi di cavi / Cables type



BK0017

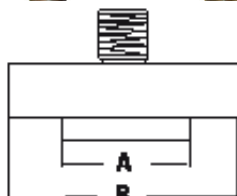
16mm² 25mm² 35mm² 50mm² 70mm²



Kit pressa cuscinetti / Press bearings kit
Per tutti i modelli / For all models

Codice Code

Tipi cuscinetti / Bearings type



A	B
17	38
20	40
20	45
25	50

BK0018



I nostri ricambi non sono originali ma con essi perfettamente intercambiabili
Our spare parts are not original but with them perfectly interchangeable



PRESSA IDRAULICA HYDRAULIC PRESS

TA27951

 Pressa idraulica manuale PER TUBI IDRAULICI / *hand hydraulic press for hydraulic hoses*

Caratteristiche tecniche - Technical features

- Misura massima tubo / *Max hose size* : 1" 2 SP
- Forza di crimpatura / *Crimping force* : 100 TON
- Diametro massimo di crimpatura / *Max crimping diameter* : 46mm
- Raccordi 90° / *90° Fittings* : 3/8"
- Massima apertura / *Max opening* : **Diametro stampo+20mm** / *Die diameter+10mm*
- Dimensioni mm/ *Dimensions mm* : 285 x 210 x 340
- Peso / *Weight* : 32kg
- Sforzo sulla leva / *Required effort* : 30Kg

Stampi standard (Non inclusi) - Standard die set (Not included)

codice	Diametri/Diameters
• TA27951.10	10mm
• TA27951.12	12mm
• TA27951.14	14mm
• TA27951.16	16mm
• TA27951.19	19mm
• TA27951.22	22mm
• TA27951.25	25mm
• TA27951.29	29mm